

PROJECT DATA

WORK SCOPE:
EXTERIOR PATIO AND EGRESS PATH

BUILDING:
BUILDING TYPE: R1-3A (COMMERCIAL - HOTEL)
STORIES: 3
BUILDING SIZE: 29,229 SQ.FT.
REMODEL AREA: 1695 SQ.FT.

SPRINKLERED: YES

ACCESSIBILITY:
ROOMS: 64
ROOMS w/ACCESSIBLE TUBS: 4
ROOMS w/ACCESSIBLE SHOWERS: 1

CODES:
EXISTING BUILDING: 2012 IEBC: INTERNATIONAL EXISTING BUILDING CODE
BUILDING: 2012 IBC: INTERNATIONAL BUILDING CODE
ELECTRIC: 2011 NEC: INTERNATIONAL ELECTRIC CODE
FIRE/LIFE SAFETY: 2012 IFC/101 NFPA: INTERNATIONAL FIRE CODE
FUEL/GAS: 2012 IFGC: INTERNATIONAL FUEL/GAS CODE
MECHANICAL: 2012 IMC: INTERNATIONAL MECH CODE
PLUMBING: 2012 IPC: Illinois State PLUMBING CODE

ACCESSIBILITY: 2012 ADAAG Accessibility Guidelines

FAIRFIELD INN 3301 SOUTH RANGELINE ROAD JOPLIN, MISSOURI 64804



Algieri Design & Purchasing Services, Inc.
"Profit Enhancing Design-Build Services For The Hospitality Industry"
PH: 972.618.1100
FAX: 972.618.1103

EXTERIOR PATIO

OWNER:
BRISAM Inn JOPLIN LLC

INTERIORS & CONSTRUCTION:
ALGIERE HOSPITALITY
ALGIERE CONSTRUCTION SERVICES
7704 SAN JACINTO PLACE, SUITE 100
DALLAS, TX 75024
972-618-1100

JOPLIN, MO BUILDING DEPARTMENT:
Building department:
602 S. Main St. Joplin, MO 64801

PUBLIC SPACE PACKAGE

Sheet Number	Sheet Name	07-15-2016 PERMIT SET
000	COVER AND INDEX	●
300	DEMOLITION PLAN	●
400	SITE PLAN	●
401	PLANS: ENLARGED NEW CONSTRUCTION	●
402	PLANS: ELECTRICAL & FFE	●
460	ELEVATIONS	●
470	SECTIONS	●

GENERAL NOTES

THESE DRAWINGS HEREIN MUST BE USED FOR DESIGN INTENT ONLY AND MUST BE FULLY COORDINATED WITH ALL OF THE DRAWINGS.

ALL DIMENSIONS SHOWN HEREIN ARE FOR DESIGN INTENT ONLY AND MUST BE FULLY MEASURED ON SITE AND COORDINATED WITH ALL OF THE DRAWINGS.

THESE DRAWINGS ARE TO BE READ IN CONJUNCTION WITH THE MATERIALS, FINISHES, AND FIXTURE SCHEDULES PROVIDED BY AGS.

ALL MECHANICAL, ELECTRICAL, PLUMBING REFERENCES ARE TO BE FULLY COORDINATED AND READ IN CONJUNCTION WITH DRAWINGS.

ALL LIGHTING SPECIFICATIONS, DETAILS AND FIXTURES TO BE FULLY COORDINATED WITH DRAWINGS.

ALL CEILING HEIGHTS SHOWN HEREIN ARE REFERENCED FROM TOP OF LEVELED CONCRETE SLAB.

ALL MILLWORK AND PLUMBING FIXTURE DIMENSIONS SHOWN HEREIN ARE REFERENCED FROM TOP OF FINISHED FLOOR.

THE CONTRACTOR SHALL VERIFY ALL CONDITIONS AND DIMENSIONS AT THE JOB SITE PRIOR TO COMMENCING WORK. THE CONTRACTOR SHALL REPORT ALL DISCREPANCIES BETWEEN THE DRAWINGS AND EXISTING CONDITIONS TO THE DESIGNER PRIOR TO COMMENCING WORK.

ALL DETAILS AND SECTIONS SHOWN ON THE DRAWINGS ARE INTENDED TO BE TYPICAL AND SHALL BE CONSTRUED TO APPLY TO ANY SIMILAR SITUATION ELSEWHERE IN THE WORK EXCEPT WHERE A DIFFERENT DETAIL IS SHOWN.

NOTE: All Federal, State, and Local codes, ordinances, and restrictions take precedence over any part of these plans which may conflict with same, and must be strictly obeyed and followed before and during construction.

PROJECT/CLIENT:
MARRIOTT:
FAIRFIELD INN
3301 S. RANGELINE RD
JOPLIN, MISSOURI
64804

JLNFI

DATE: 07/15/2016

REVISIONS	DATE

PROJECT NO. 1606
DRAWN BY: MG
CHECKED BY: RA

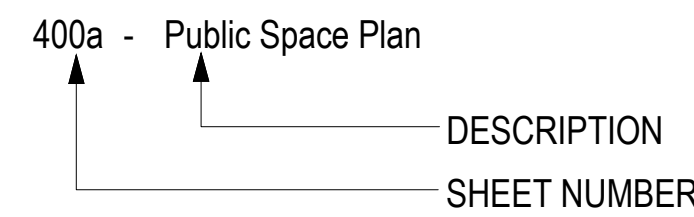
INDEX

000

CONVENTIONS

THE MAIN SOURCE FORMING THE BASIS FOR THE ORGANIZATION, SET-UP, GRAPHICS AND TITLING OF THE DRAWINGS IS MARRIOTT STANDARDS. THIS IS THEIR DEVELOPED METHOD THEY HAVE ESTABLISHED FOR REMODELING HOTELS WHICH FACILITATES REVISIONS AND REPLICATION EASILY AND EFFECTIVELY. THE SHEET NUMBERING ORDERS THE SET INTO SECTIONS BASED ON DRAWING TYPE. THE FOLLOWING IS AN OUTLINE OF THEIR GENERAL NUMBERING CRITERIA:

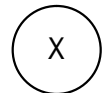
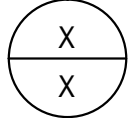
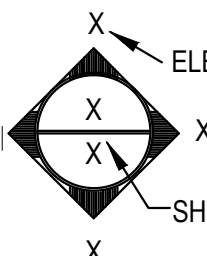

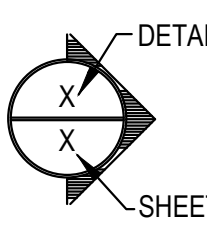

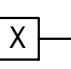
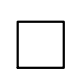
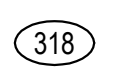
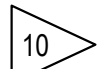
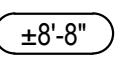

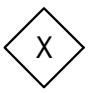
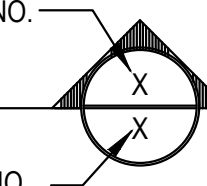
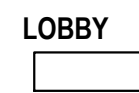
- 000 - GENERAL INFORMATION SHEETS
- 100 - SITE AND BUILDING PLANS
- 200 - BUILDING ELEVATIONS
- 300 - PLANS DEMOLITION
- 400 - PLANS & ELEVATIONS
- 500 - SECTIONS
- 600 - NOT USED
- 700 - NOT USED
- 800 - FOOD SERVICE DRAWINGS
- 900 - CRITERIA PLANS



THERE ARE NO DISCIPLINE DESIGNATORS IN THIS SET OF DRAWINGS.

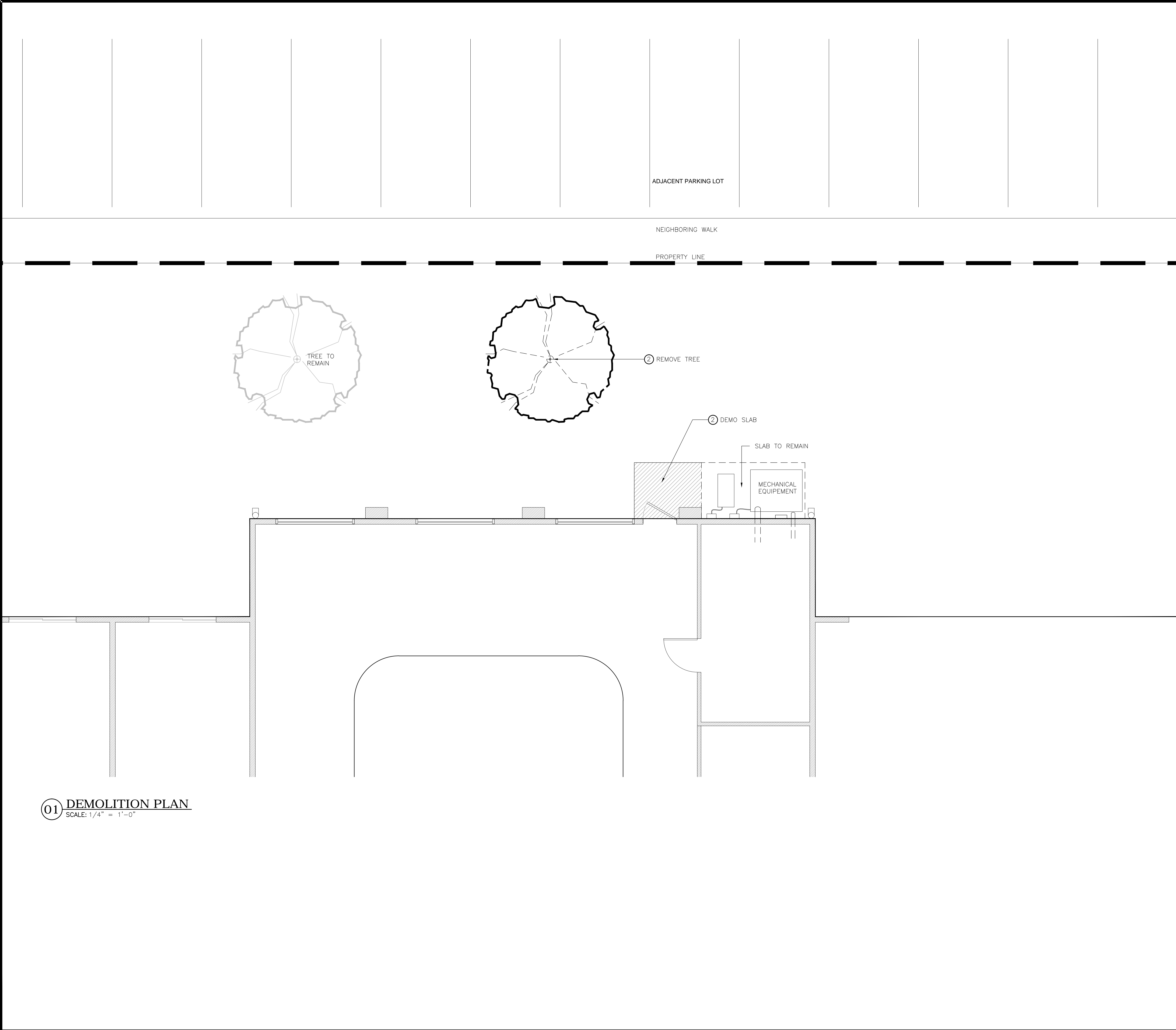
FILE NAMING CLOSELY FOLLOWS THE ACTUAL DRAWING NUMBER AND TITLE. FOR EXAMPLE SHEET 420, THE KING (STANDARD) GUESTROOM DRAWING HAS A FILE NAME OF 420_KING-STD. SHEET 421, THE ACCESSIBLE KING GUESTROOM IS NAMED 421_KING-ACC. WHEN SEARCHING DIRECTORIES FOR A PARTICULAR DRAWING THE SHEET NUMBER AND NAME WILL MAKE THIS TASK MORE INTUITIVE. INCLUDING THE SHEET NUMBER FIRST WILL ALSO AUTOMATICALLY ORGANIZE THE FILES IN THE ORDER OF THE DWG SET. GROUPING DRAWINGS FOR A BATCH PLOTTING AND OTHER SIMILAR FUNCTIONS IS ALSO MUCH SIMPLIFIED.

SYMBOLS

	GRID NUMBER		DETAIL REFERENCE
	ELEV. NO. INTERIOR ELEVATION REFERENCE		DATUM ELEVATION
	DETAIL NO. EXTERIOR ELEVATION REFERENCE		DOOR NUMBER REFERENCE
	PARTITION TYPE		ACCESSORY REFERENCE
	FINISH TAG		FLAG or CRITERIA NOTE
	CEILING HEIGHT		REVISION NUMBER REFERENCE
	WINDOW TYPE		BUILDING SECTION REFERENCE
			ROOM NAME ROOM NUMBER
		X-000	FURNISHINGS REFERENCE

Drawing name: S:\JOBS - Design and Buyouts\1606 Joplin MO - Fairfield Inn\CAD\PATIO - 000 COVER INDEX.dwg Plotted on: Jul 28, 2016

Drawing name: S:\JOBS - Design and Buyouts\1606 Joplin MO - Fairfield Inn\CAD\Patio - 300 DEMO.dwg Plotted on: Jul 28, 2016



DEMOLITION NOTES

GENERAL NOTES

- ① DEMO CONCRETE PAD UNDER EXISTING CONDENSER UNITS AND DOOR.
- ② REMOVE TREE.


Algere Design & Purchasing Services, Inc.
 "Profit Enhancing Design-Build Services For The Hospitality Industry"
 PH: 972.618.1100
 FAX: 972.618.1103

GENERAL NOTES

THESE DRAWINGS HEREIN MUST BE USED FOR DESIGN INTENT ONLY AND MUST BE FULLY COORDINATED WITH ALL OF THE DRAWINGS.

ALL DIMENSIONS SHOWN HEREIN ARE FOR DESIGN INTENT ONLY AND MUST BE FULLY MEASURED ON SITE AND COORDINATED WITH ALL OF THE DRAWINGS.

THESE DRAWINGS ARE TO BE READ IN CONJUNCTION WITH THE MATERIALS, FINISHES, AND FIXTURE SCHEDULES PROVIDED BY A.C.S.

ALL MECHANICAL, ELECTRICAL, PLUMBING REFERENCES ARE TO BE FULLY COORDINATED AND READ IN CONJUNCTION WITH DRAWINGS.

ALL LIGHTING SPECIFICATIONS, DETAILS AND FIXTURES TO BE FULLY COORDINATED WITH DRAWINGS.

ALL CEILING HEIGHTS SHOWN HEREIN ARE REFERENCED FROM TOP OF LEVELED CONCRETE SLAB.

ALL MILLWORK AND PLUMBING FIXTURE DIMENSIONS SHOWN HEREIN ARE REFERENCED FROM TOP OF FINISHED FLOOR.

THE CONTRACTOR SHALL VERIFY ALL CONDITIONS AND DIMENSIONS AT THE JOB SITE PRIOR TO COMMENCING WORK. THE CONTRACTOR SHALL REPORT ALL DISCREPANCIES BETWEEN THE DRAWINGS AND EXISTING CONDITIONS TO THE DESIGNER PRIOR TO COMMENCING WORK.

ALL DETAILS AND SECTIONS SHOWN ON THE DRAWINGS ARE INTENDED TO BE TYPICAL AND SHALL BE CONSTRUED TO APPLY TO ANY SIMILAR SITUATION ELSEWHERE IN THE WORK EXCEPT WHERE A DIFFERENT DETAIL IS SHOWN.

NOTE: All Federal, State, and Local codes, ordinances, and restrictions take precedence over any part of these plans which may conflict with same, and must be strictly obeyed and followed before and during construction.

PROJECT/CLIENT:
**MARRIOTT:
 FAIRFIELD INN**
 3301 S. RANGELINE RD
 JOPLIN, MISSOURI
 64804

JLNFI

DATE: 07/15/2016

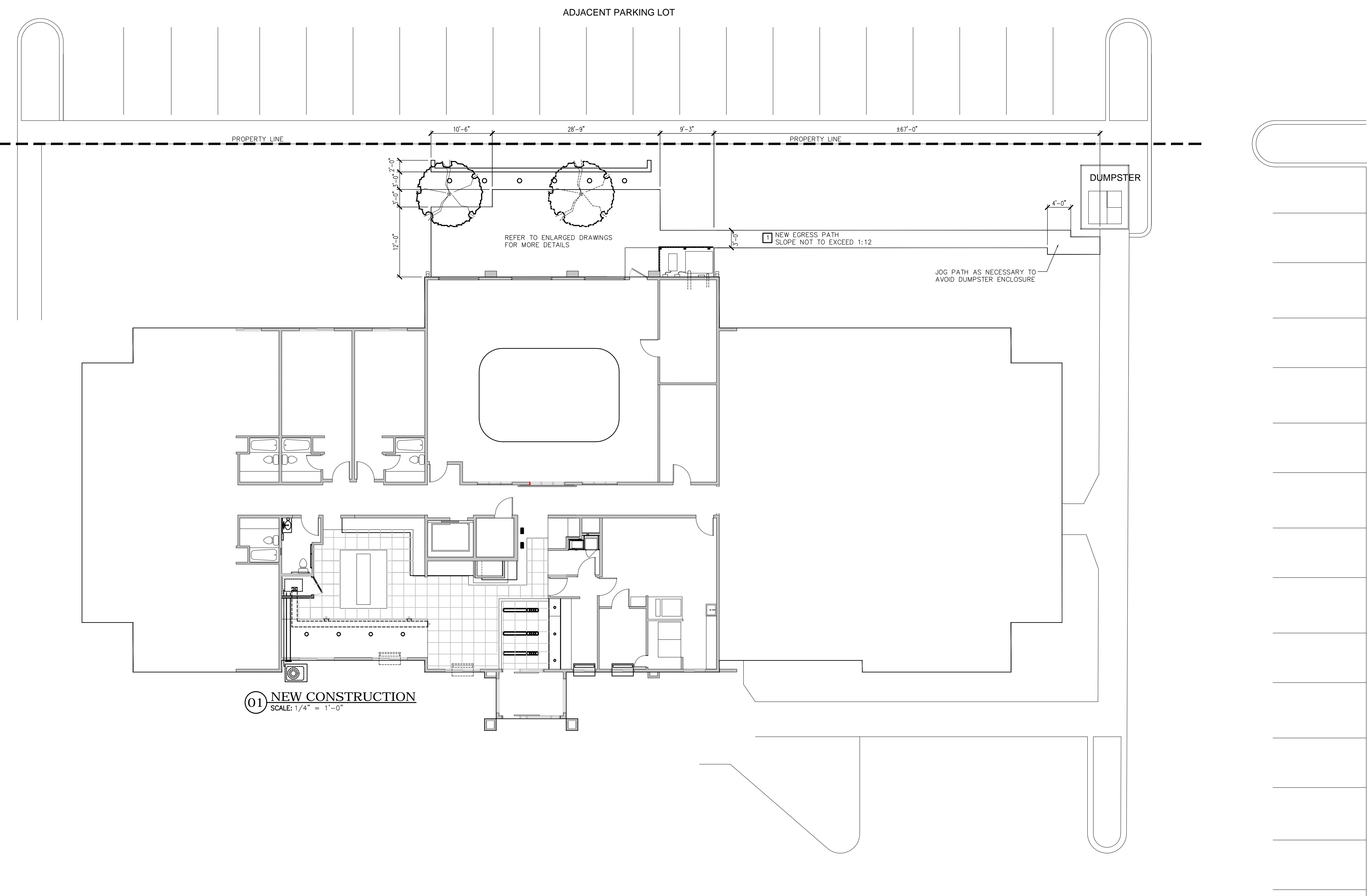
REVISIONS	DATE

PROJECT NO. 1606
 DRAWN BY: MG
 CHECKED BY: RA

PLAN:
 DEMOLITION

300

Drawing name: S:\JOBS - Design and Buyouts\1606 Joplin MO - Fairfield Inn\CAD\Patio - 400 NEW CONSTRUCTION.dwg Plotted on: Jul 28, 2016



01 NEW CONSTRUCTION
SCALE: 1/4" = 1'-0"

NEW CONSTRUCTION

GENERAL NOTES:

1. REFER TO FINISH SPEC NOTEBOOK FOR ADDITIONAL INFORMATION.

PATIO

1. INSTALL NEW CONCRETE EGRESS PATH FROM EXIT TO PARKING LOT.



Algere Design & Purchasing Services, Inc.
"Profit Enhancing Design-Build Services For The Hospitality Industry"
PH: 972.618.1100
FAX: 972.618.1103

GENERAL NOTES
THESE DRAWINGS HEREIN MUST BE USED FOR DESIGN INTENT ONLY AND MUST BE FULLY COORDINATED WITH ALL OF THE DRAWINGS.
ALL DIMENSIONS SHOWN HEREIN ARE FOR DESIGN INTENT ONLY AND MUST BE FULLY MEASURED ON SITE AND COORDINATED WITH ALL OF THE DRAWINGS.
THESE DRAWINGS ARE TO BE READ IN CONJUNCTION WITH THE MATERIALS, FINISHES, AND FIXTURE SCHEDULES PROVIDED BY AGS.
ALL MECHANICAL, ELECTRICAL, PLUMBING REFERENCES ARE TO BE FULLY COORDINATED AND READ IN CONJUNCTION WITH DRAWINGS.
ALL LIGHTING SPECIFICATIONS, DETAILS AND FIXTURES TO BE FULLY COORDINATED WITH DRAWINGS.
ALL CEILING HEIGHTS SHOWN HEREIN ARE REFERENCED FROM TOP OF LEVELED CONCRETE SLAB.
ALL MILLWORK AND PLUMBING FIXTURE DIMENSIONS SHOWN HEREIN ARE REFERENCED FROM TOP OF FINISHED FLOOR.
THE CONTRACTOR SHALL VERIFY ALL CONDITIONS AND DIMENSIONS AT THE JOB SITE PRIOR TO COMMENCING WORK. THE CONTRACTOR SHALL REPORT ALL DISCREPANCIES BETWEEN THE DRAWINGS AND EXISTING CONDITIONS TO THE DESIGNER PRIOR TO COMMENCING WORK.
ALL DETAILS AND SECTIONS SHOWN ON THE DRAWINGS ARE INTENDED TO BE TYPICAL AND SHALL BE CONSTRUED TO APPLY TO ANY SIMILAR SITUATION ELSEWHERE IN THE WORK EXCEPT WHERE A DIFFERENT DETAIL IS SHOWN.
NOTE: All Federal, State, and Local codes, ordinances, and restrictions take precedence over any part of these plans which may conflict with same, and must be strictly obeyed and followed before and during construction.

PROJECT/CLIENT:
**MARRIOTT:
FAIRFIELD INN**
3301 S. RANGELINE RD
JOPLIN, MISSOURI
64804

JLNFI

DATE: 07/15/2016

REVISIONS	DATE

PROJECT NO. 1606
DRAWN BY: MG
CHECKED BY: RA

PATIO:
NEW CONSTRUCTION

400

Drawing name: S:\JOBS - Design and Buyouts\1606 Joplin MO - Fairfield Inn\CAD\Patio - 400 NEW CONSTRUCTION.dwg Plotted on: Jul 28, 2016

ADJACENT PARKING LOT

NEW CONSTRUCTION

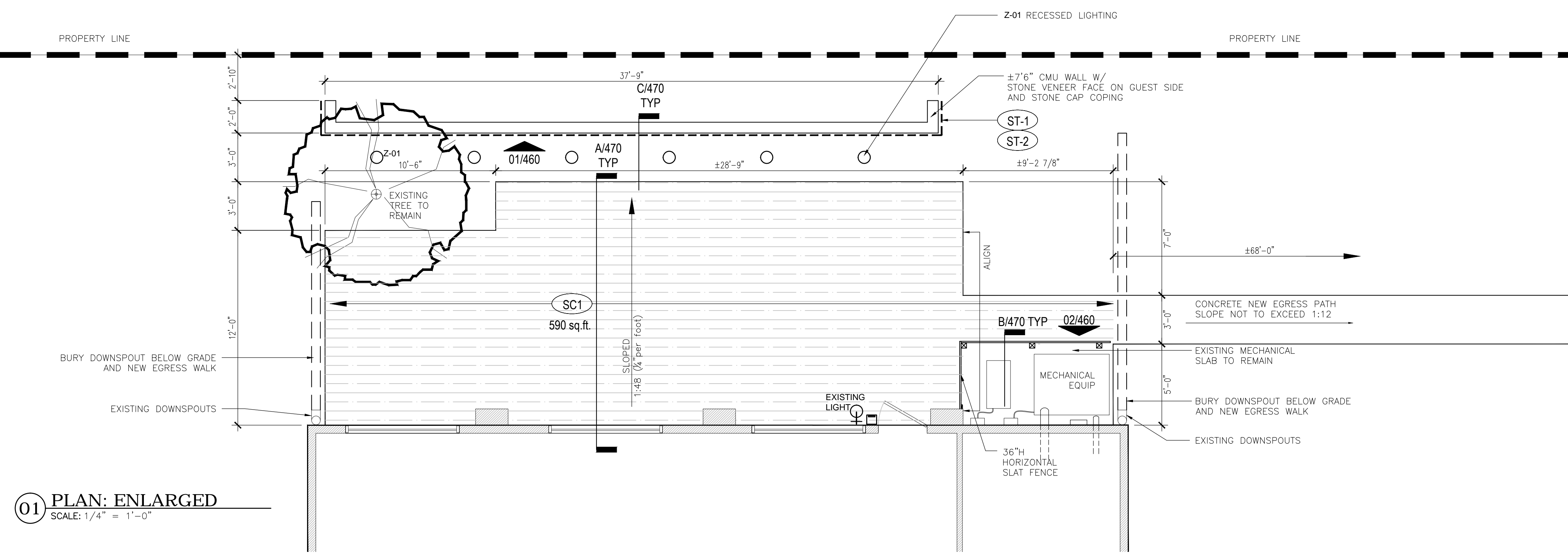
GENERAL NOTES:

1. REFER TO FINISH SPEC NOTEBOOK FOR ADDITIONAL INFORMATION.

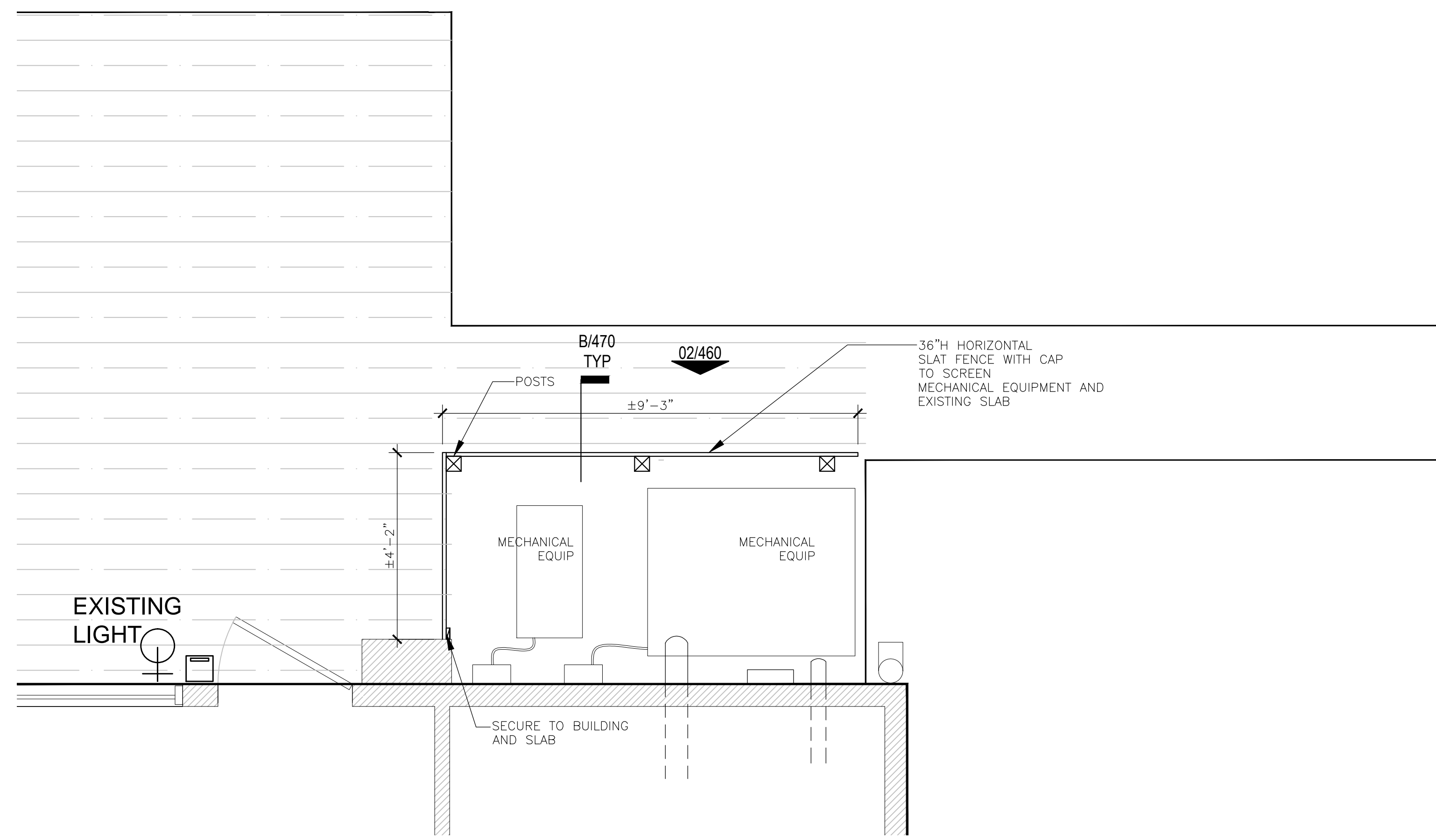
- PATIO**
1. INSTALL NEW CONCRETE PATIO SLAB.
 2. INSTALL NEW STONE CLAD CMU WALL WITH CAP.



Algere Design & Purchasing Services, Inc.
 "Profit Enhancing Design-Build Services For The Hospitality Industry"
 PH: 972.618.1100
 FAX: 972.618.1103



01 PLAN: ENLARGED
 SCALE: 1/4" = 1'-0"



02 PLAN: ENLARGED MECHANICAL FENCE
 SCALE: 1/4" = 1'-0"

GENERAL NOTES

THESE DRAWINGS HEREIN MUST BE USED FOR DESIGN INTENT ONLY AND MUST BE FULLY COORDINATED WITH ALL OF THE DRAWINGS.

ALL DIMENSIONS SHOWN HEREIN ARE FOR DESIGN INTENT ONLY AND MUST BE FULLY MEASURED ON SITE AND COORDINATED WITH ALL OF THE DRAWINGS.

THESE DRAWINGS ARE TO BE READ IN CONJUNCTION WITH THE MATERIALS, FINISHES, AND FIXTURE SCHEDULES PROVIDED BY A/C.

ALL MECHANICAL, ELECTRICAL, PLUMBING REFERENCES ARE TO BE FULLY COORDINATED AND READ IN CONJUNCTION WITH DRAWINGS.

ALL LIGHTING SPECIFICATIONS, DETAILS AND FIXTURES TO BE FULLY COORDINATED WITH DRAWINGS.

ALL CEILING HEIGHTS SHOWN HEREIN ARE REFERENCED FROM TOP OF LEVELED CONCRETE SLAB.

ALL MILLWORK AND PLUMBING FIXTURE DIMENSIONS SHOWN HEREIN ARE REFERENCED FROM TOP OF FINISHED FLOOR.

THE CONTRACTOR SHALL VERIFY ALL CONDITIONS AND DIMENSIONS AT THE JOB SITE PRIOR TO COMMENCING WORK. THE CONTRACTOR SHALL REPORT ALL DISCREPANCIES BETWEEN THE DRAWINGS AND EXISTING CONDITIONS TO THE DESIGNER PRIOR TO COMMENCING WORK.

ALL DETAILS AND SECTIONS SHOWN ON THE DRAWINGS ARE INTENDED TO BE TYPICAL AND SHALL BE CONSTRUED TO APPLY TO ANY SIMILAR SITUATION ELSEWHERE IN THE WORK EXCEPT WHERE A DIFFERENT DETAIL IS SHOWN.

NOTE: All Federal, State, and Local codes, ordinances, and restrictions take precedence over any part of these plans which may conflict with same, and must be strictly obeyed and followed before and during construction.

PROJECT/CLIENT:
MARRIOTT:
FAIRFIELD INN
 3301 S. RANGELINE RD
 JOPLIN, MISSOURI
 64804

JLNFI

DATE: 07/15/2016

REVISIONS	DATE

PROJECT NO. 1606
 DRAWN BY: MG
 CHECKED BY: RA

PATIO: ENLARGED
NEW CONSTRUCTION

401

Drawing name: S:\JOBS - Design and Buyouts\1606 Joplin MO - Fairfield Inn\CAD\Patio - 400 NEW CONSTRUCTION.dwg Plotted on: Jul 28, 2016

NEW CONSTRUCTION

GENERAL NOTES:

1. REFER TO FINISH SPEC NOTEBOOK FOR ADDITIONAL INFORMATION.

PATIO: ELECTRICAL

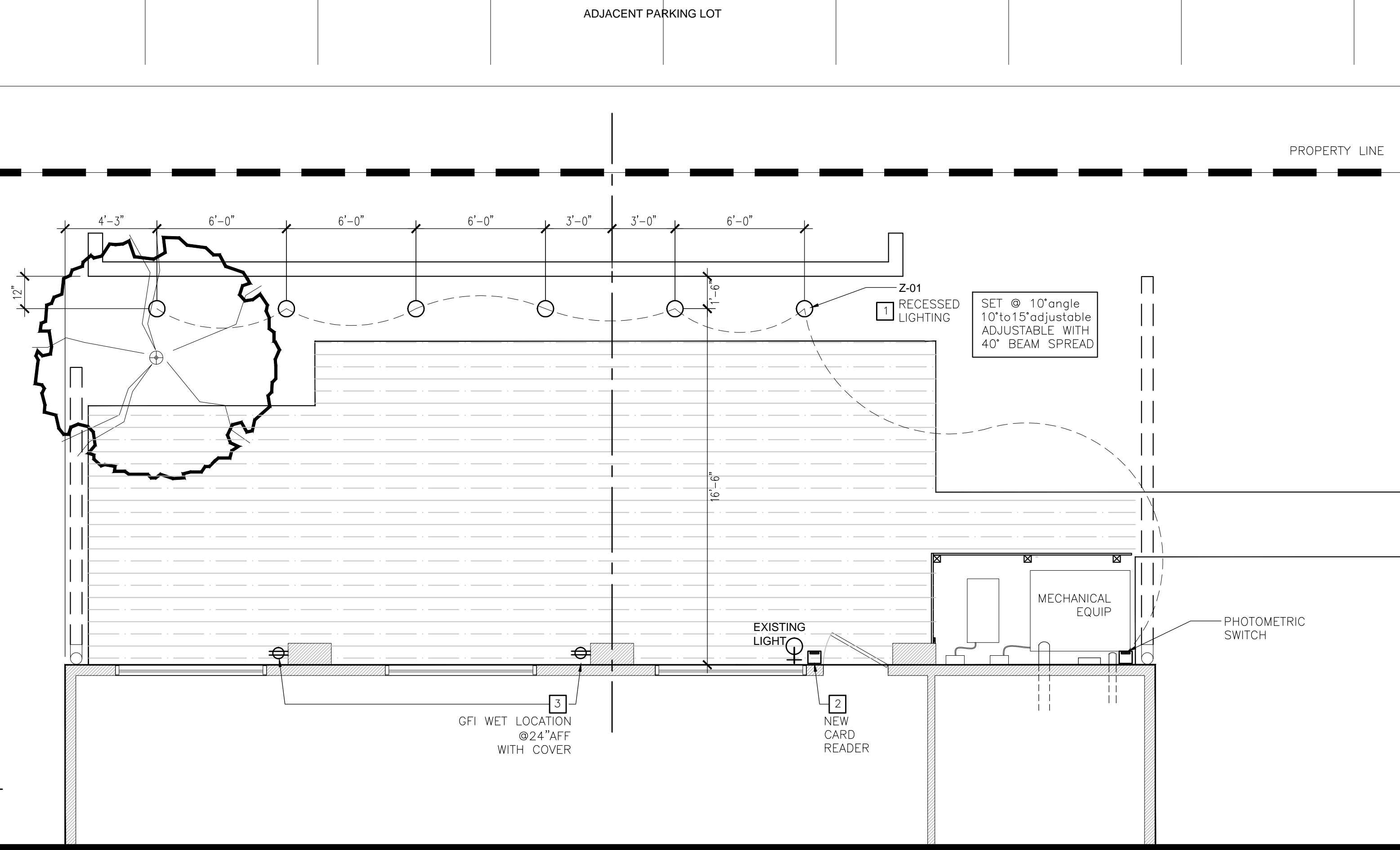
1. INSTALL LIGHTING PER PLAN W/PHOTOMETRIC SWITCH.
2. INSTALL CARD READER AT POOL DOOR.
3. INSTALL GFI WET LOCATION WITH COVER @24" AFF. RUN CONDUIT DOWN STUCCO EXTERIOR AND INTO GROUND BELOW SLAB.

PATIO: FURNITURE

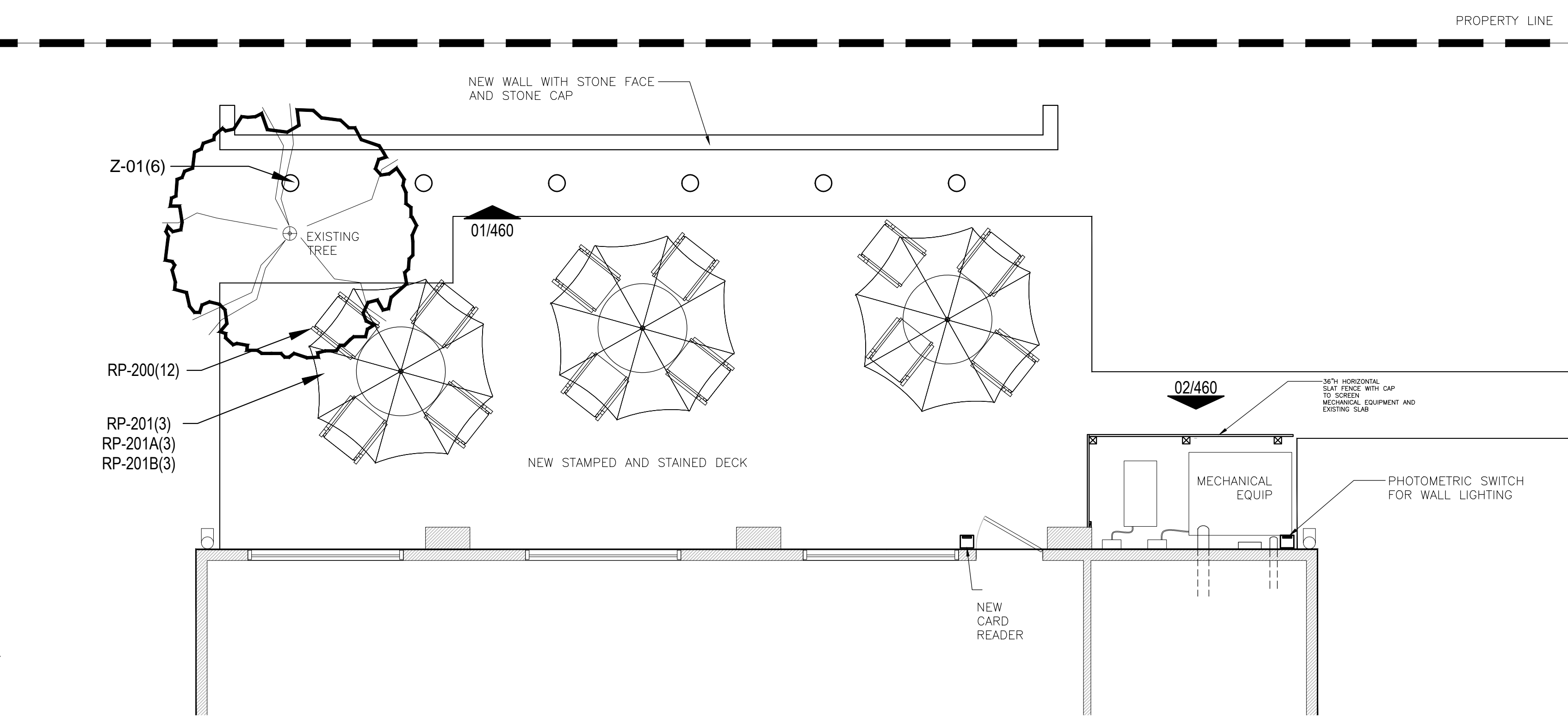
1. INSTALL FURNITURE PER PLAN



Algere Design & Purchasing Services, Inc.
 "Profit Enhancing Design-Build Services For The Hospitality Industry"
 PH: 972.618.1100
 FAX: 972.618.1103



01 PLAN: ELECTRICAL
 SCALE: 1/4" = 1'-0"



02 PLAN: FURNITURE
 SCALE: 1/4" = 1'-0"

GENERAL NOTES
 THESE DRAWINGS HEREIN MUST BE USED FOR DESIGN INTENT ONLY AND MUST BE FULLY COORDINATED WITH ALL OF THE DRAWINGS.
 ALL DIMENSIONS SHOWN HEREIN ARE FOR DESIGN INTENT ONLY AND MUST BE FULLY MEASURED ON SITE AND COORDINATED WITH ALL OF THE DRAWINGS.
 THESE DRAWINGS ARE TO BE READ IN CONJUNCTION WITH THE MATERIALS, FINISHES, AND FIXTURE SCHEDULES PROVIDED BY AGS.
 ALL MECHANICAL, ELECTRICAL, PLUMBING REFERENCES ARE TO BE FULLY COORDINATED AND READ IN CONJUNCTION WITH DRAWINGS.
 ALL LIGHTING SPECIFICATIONS, DETAILS AND FIXTURES TO BE FULLY COORDINATED WITH DRAWINGS.
 ALL CEILING HEIGHTS SHOWN HEREIN ARE REFERENCED FROM TOP OF LEVELED CONCRETE SLAB.
 ALL MILLWORK AND PLUMBING FIXTURE DIMENSIONS SHOWN HEREIN ARE REFERENCED FROM TOP OF FINISHED FLOOR.
 THE CONTRACTOR SHALL VERIFY ALL CONDITIONS AND DIMENSIONS AT THE JOB SITE PRIOR TO COMMENCING WORK. THE CONTRACTOR SHALL REPORT ALL DISCREPANCIES BETWEEN THE DRAWINGS AND EXISTING CONDITIONS TO THE DESIGNER PRIOR TO COMMENCING WORK.
 ALL DETAILS AND SECTIONS SHOWN ON THE DRAWINGS ARE INTENDED TO BE TYPICAL AND SHALL BE CONSTRUED TO APPLY TO ANY SIMILAR SITUATION ELSEWHERE IN THE WORK EXCEPT WHERE A DIFFERENT DETAIL IS SHOWN.
 NOTE: All Federal, State, and Local codes, ordinances, and restrictions take precedence over any part of these plans which may conflict with same, and must be strictly obeyed and followed before and during construction.

PROJECT/CLIENT:
**MARRIOTT:
 FAIRFIELD INN**
 3301 S. RANGELINE RD
 JOPLIN, MISSOURI
 64804

JLNFI

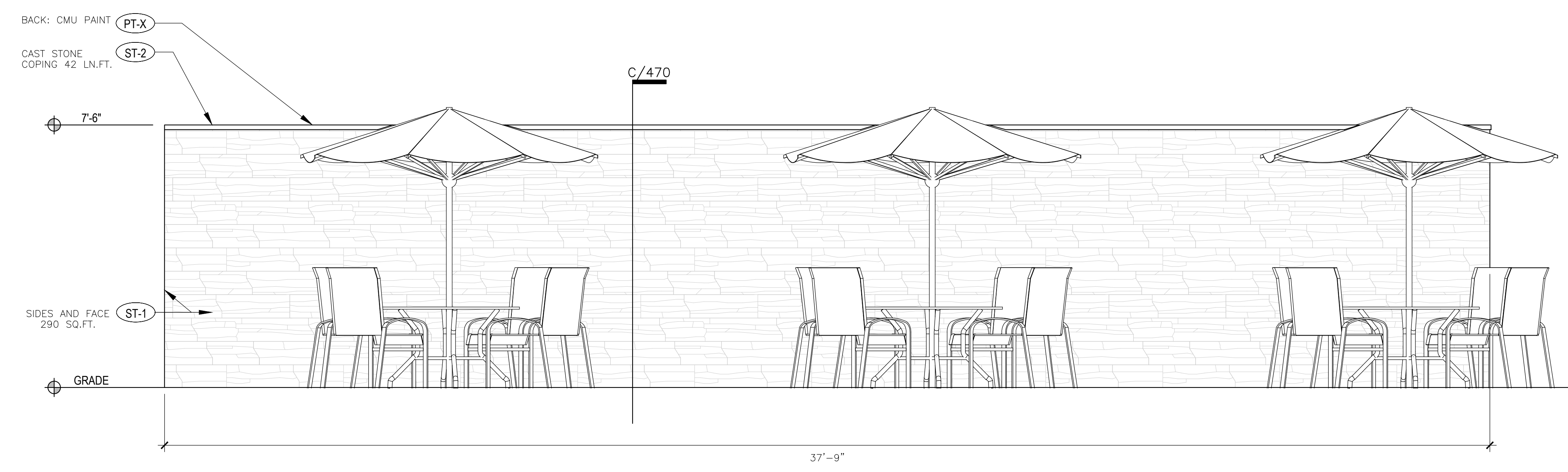
DATE: 07/15/2016

REVISIONS	DATE

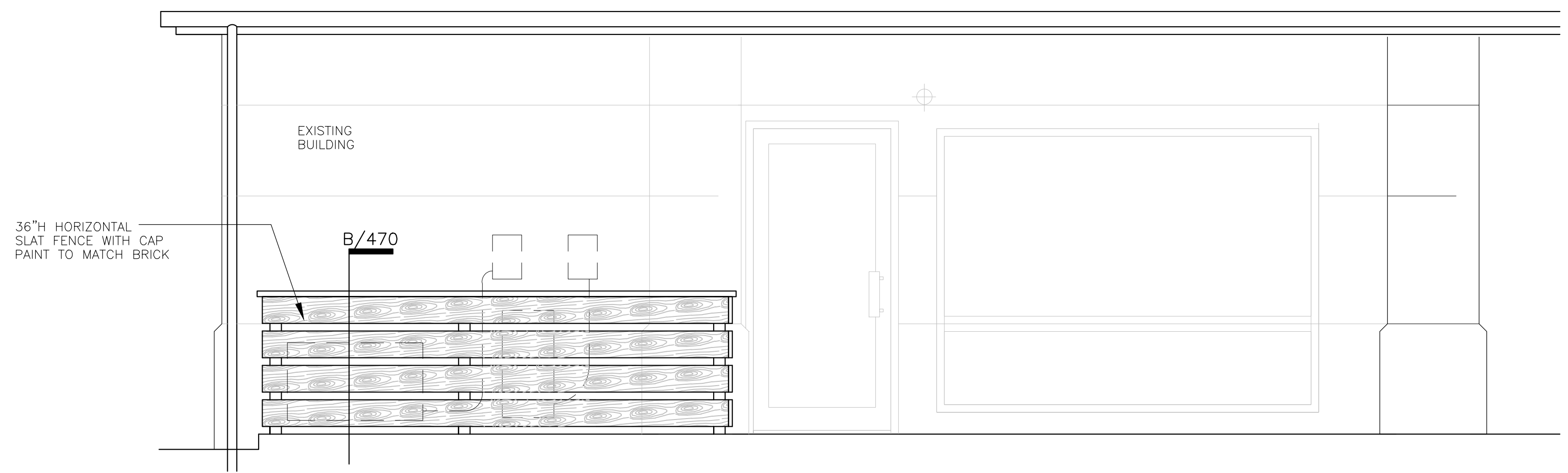
PROJECT NO. 1606
 DRAWN BY: MG
 CHECKED BY: RA

PATIO:
 ELECTRICAL

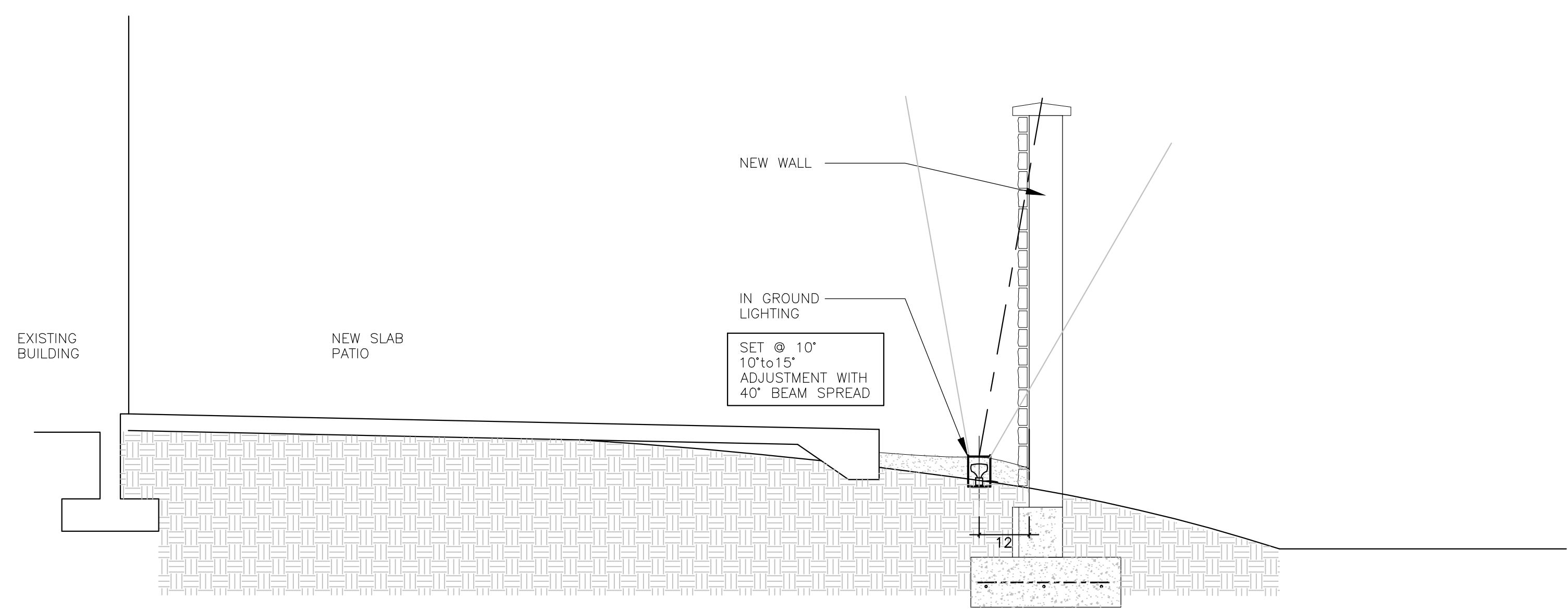
402



01 ELEVATION
 SCALE: 1/2" = 1'-0"



02 ELEVATION: EQUIPMENT SCREEN
 SCALE: 1/2" = 1'-0"



03 ELEVATION
 SCALE: 1/2" = 1'-0"

GENERAL NOTES

THESE DRAWINGS HEREIN MUST BE USED FOR DESIGN INTENT ONLY AND MUST BE FULLY COORDINATED WITH ALL OF THE DRAWINGS.

ALL DIMENSIONS SHOWN HEREIN ARE FOR DESIGN INTENT ONLY AND MUST BE FULLY MEASURED ON SITE AND COORDINATED WITH ALL OF THE DRAWINGS.

THESE DRAWINGS ARE TO BE READ IN CONJUNCTION WITH THE MATERIALS, FINISHES, AND FIXTURE SCHEDULES PROVIDED BY A.S.

ALL MECHANICAL, ELECTRICAL, PLUMBING REFERENCES ARE TO BE FULLY COORDINATED AND READ IN CONJUNCTION WITH DRAWINGS.

ALL LIGHTING SPECIFICATIONS, DETAILS AND FIXTURES TO BE FULLY COORDINATED WITH DRAWINGS.

ALL CEILING HEIGHTS SHOWN HEREIN ARE REFERENCED FROM TOP OF LEVELED CONCRETE SLAB.

ALL MILLWORK AND PLUMBING FIXTURE DIMENSIONS SHOWN HEREIN ARE REFERENCED FROM TOP OF FINISHED FLOOR.

THE CONTRACTOR SHALL VERIFY ALL CONDITIONS AND DIMENSIONS AT THE JOB SITE PRIOR TO COMMENCING WORK. THE CONTRACTOR SHALL REPORT ALL DISCREPANCIES BETWEEN THE DRAWINGS AND EXISTING CONDITIONS TO THE DESIGNER PRIOR TO COMMENCING WORK.

ALL DETAILS AND SECTIONS SHOWN ON THE DRAWINGS ARE INTENDED TO BE TYPICAL AND SHALL BE CONSTRUED TO APPLY TO ANY SIMILAR SITUATION ELSEWHERE IN THE WORK EXCEPT WHERE A DIFFERENT DETAIL IS SHOWN.

NOTE: All Federal, State, and Local codes, ordinances, and restrictions take precedence over any part of these plans which may conflict with same, and must be strictly obeyed and followed before and during construction.

PROJECT/CLIENT:
**MARRIOTT:
 FAIRFIELD INN**
 3301 S. RANGELINE RD
 JOPLIN, MISSOURI
 64804

JLNFI

DATE: 07/15/2016

REVISIONS	DATE

PROJECT NO. 1606
 DRAWN BY: MG
 CHECKED BY: RA

PATIO:
 ELEVATIONS &
 SECTIONS

460

GENERAL NOTES

THESE DRAWINGS HEREIN MUST BE USED FOR DESIGN INTENT ONLY AND MUST BE FULLY COORDINATED WITH ALL OF THE DRAWINGS.

ALL DIMENSIONS SHOWN HEREIN ARE FOR DESIGN INTENT ONLY AND MUST BE FULLY MEASURED ON SITE AND COORDINATED WITH ALL OF THE DRAWINGS.

THESE DRAWINGS ARE TO BE READ IN CONJUNCTION WITH THE MATERIALS, FINISHES, AND FIXTURE SCHEDULES PROVIDED BY A.S.

ALL MECHANICAL, ELECTRICAL, PLUMBING REFERENCES ARE TO BE FULLY COORDINATED AND READ IN CONJUNCTION WITH DRAWINGS.

ALL LIGHTING SPECIFICATIONS, DETAILS AND FIXTURES TO BE FULLY COORDINATED WITH DRAWINGS.

ALL CEILING HEIGHTS SHOWN HEREIN ARE REFERENCED FROM TOP OF LEVELED CONCRETE SLAB.

ALL MILLWORK AND PLUMBING FIXTURE DIMENSIONS SHOWN HEREIN ARE REFERENCED FROM TOP OF FINISHED FLOOR.

THE CONTRACTOR SHALL VERIFY ALL CONDITIONS AND DIMENSIONS AT THE JOB SITE PRIOR TO COMMENCING WORK. THE CONTRACTOR SHALL REPORT ALL DISCREPANCIES BETWEEN THE DRAWINGS AND EXISTING CONDITIONS TO THE DESIGNER PRIOR TO COMMENCING WORK.

ALL DETAILS AND SECTIONS SHOWN ON THE DRAWINGS ARE INTENDED TO BE TYPICAL AND SHALL BE CONSTRUED TO APPLY TO ANY SIMILAR SITUATION ELSEWHERE IN THE WORK EXCEPT WHERE A DIFFERENT DETAIL IS SHOWN.

NOTE: All Federal, State, and Local codes, ordinances, and restrictions take precedence over any part of these plans which may conflict with same, and must be strictly obeyed and followed before and during construction.

PROJECT/CLIENT:
**MARRIOTT:
 FAIRFIELD INN**
 3301 S. RANGELINE RD
 JOPLIN, MISSOURI
 64804

JLNFI

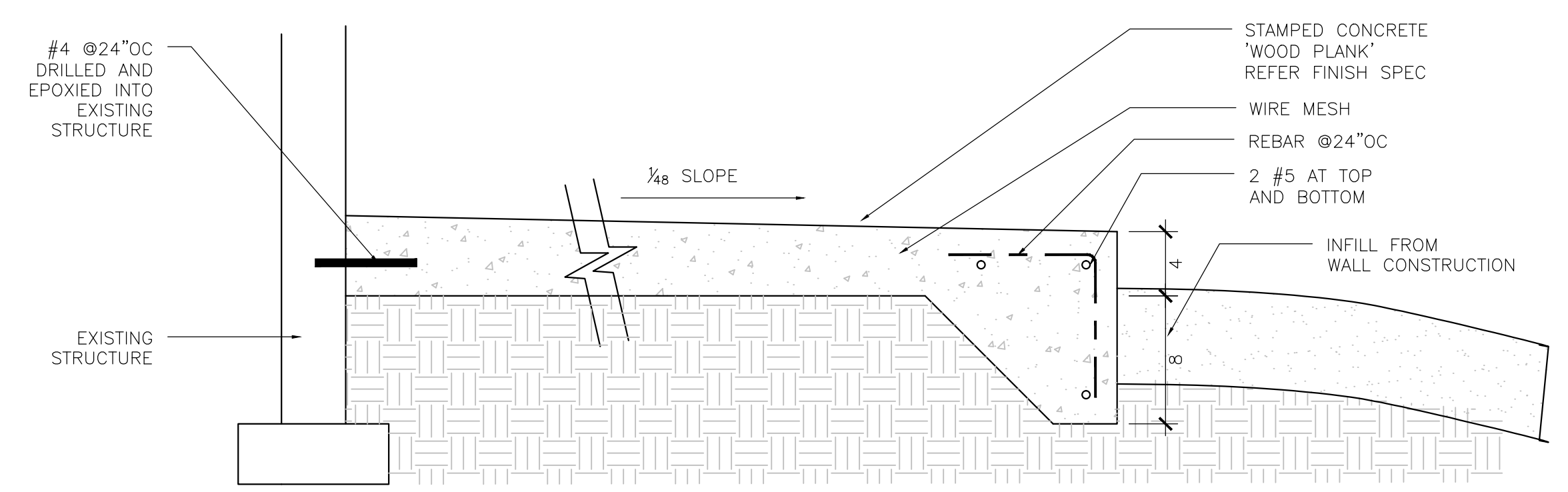
DATE: 07/15/2016

REVISIONS	DATE

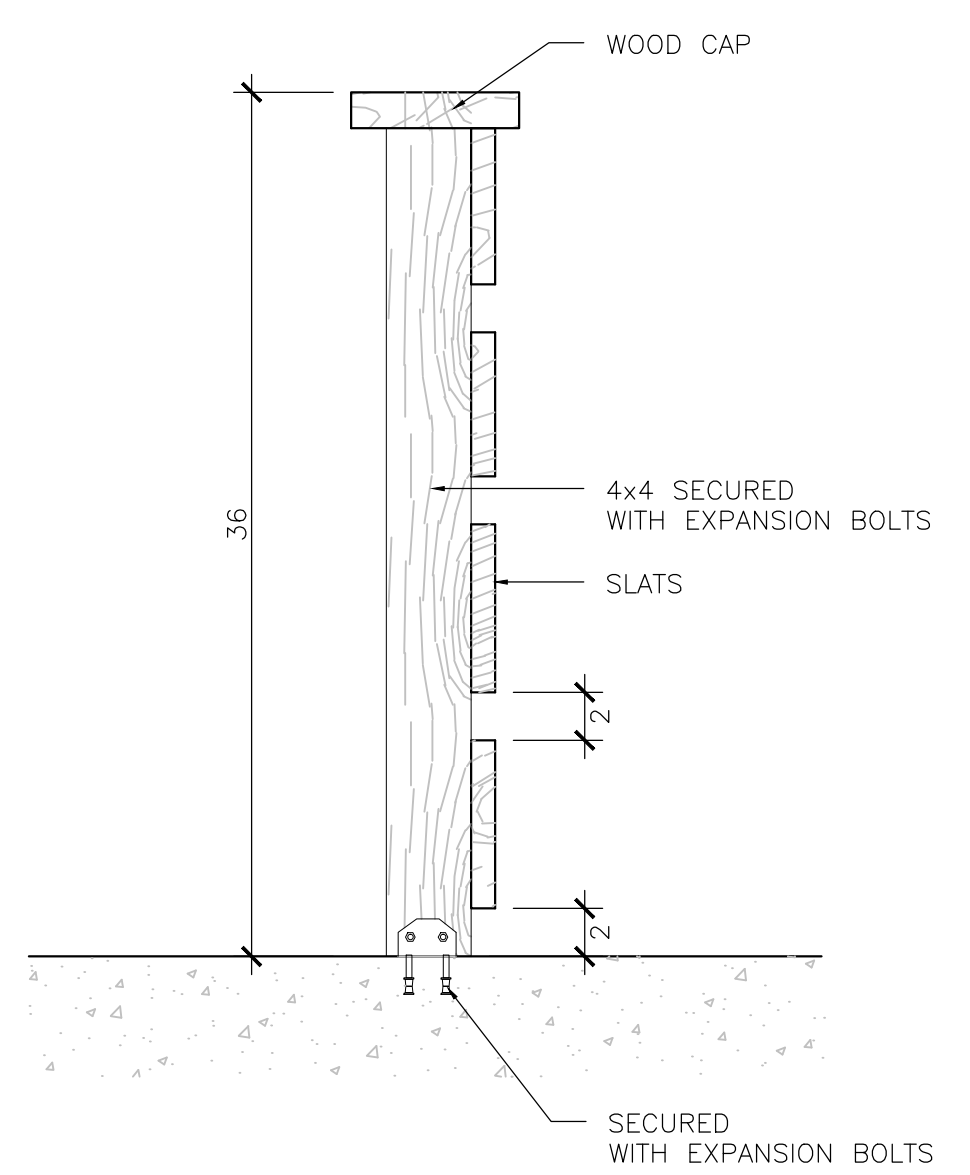
PROJECT NO. 1606
 DRAWN BY: MG
 CHECKED BY: RA

**PATIO:
 SECTIONS**

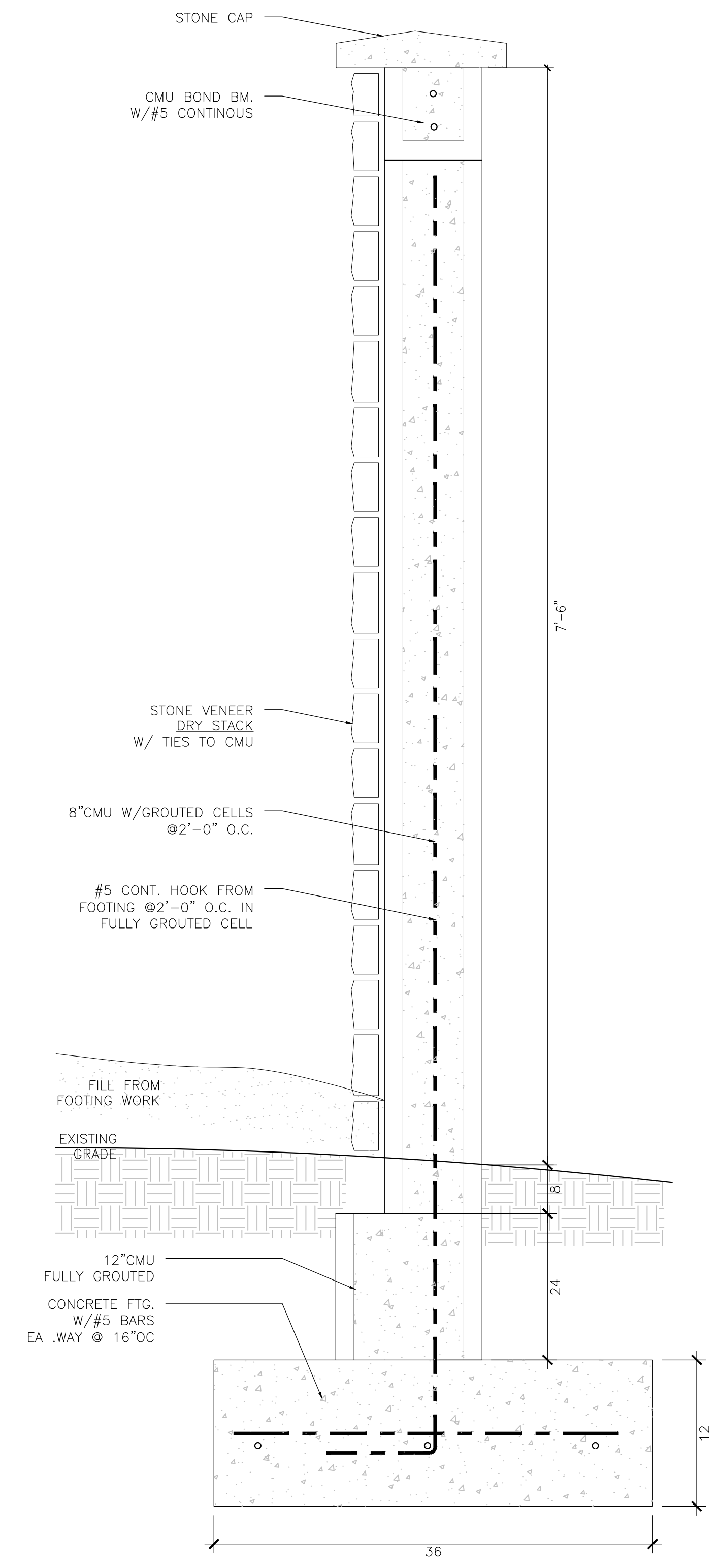
470



A PATIO SLAB
 SCALE: 1 1/2" = 1'-0"



B PATIO SLAB
 SCALE: 1 1/2" = 1'-0"



C WALL
 SCALE: 1 1/2" = 1'-0"